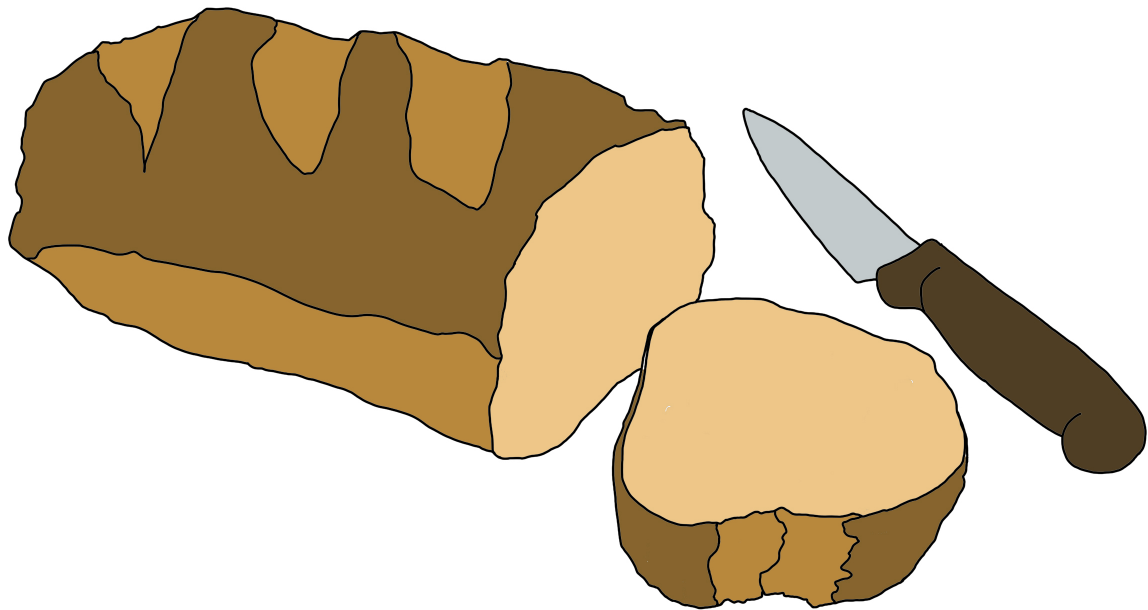


**University  
of Basel**

# **Allergies: A large box with various compartments**

Prof. Andreas J. Bircher



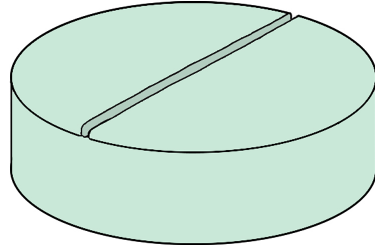






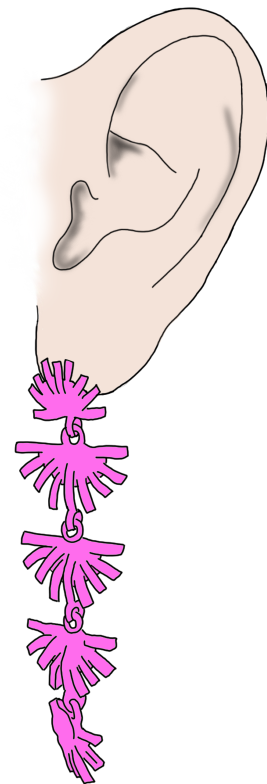
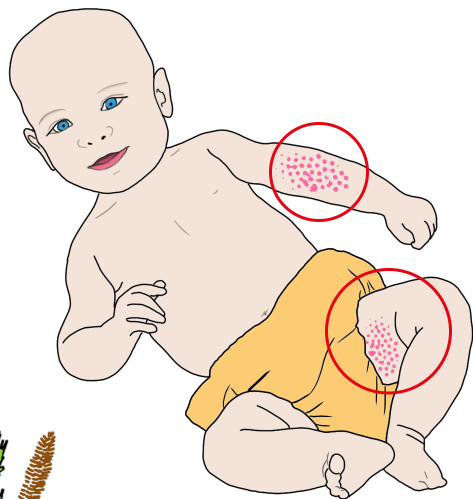


**ANTI-HISTAMINE TABLET**





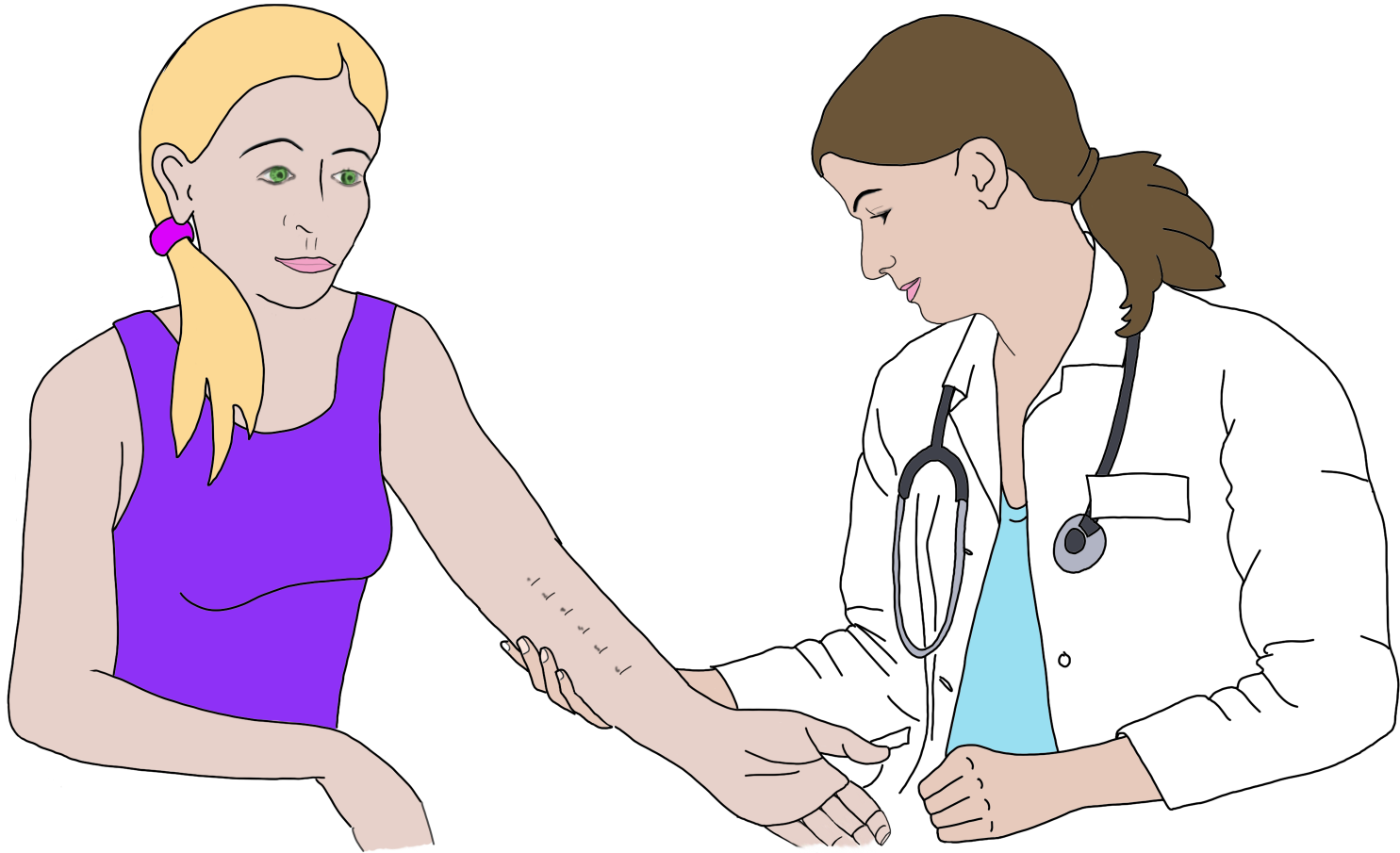


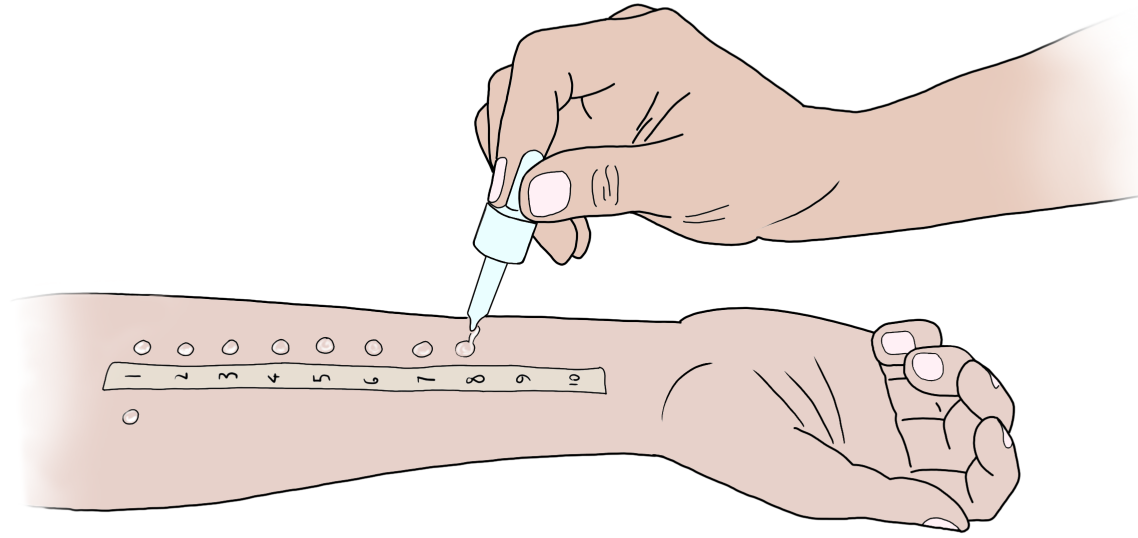


# General Practitioner

## Initial considerations

- 1) A known hay fever indicating an atopic background
- 2) A suspected food allergy to an ingredient in bread
- 3) An allergy to nickel in jewelry and metal buttons





# Information from allergist

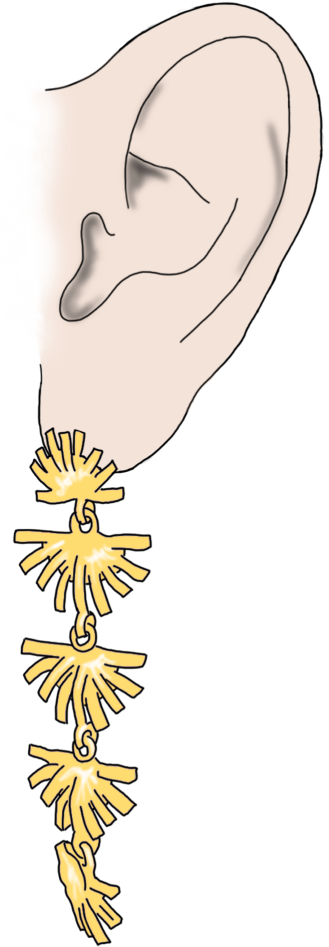
- Atopic background
- Immediate reaction to grass pollen (hay fever)
- Immediate reaction to wheat  
measuring IgE-antibodies

# Information from allergist

- Sensitization to white metals (e.g. nickel)
- Local allergic contact dermatitis
- T lymphocytes
- Delayed type allergy

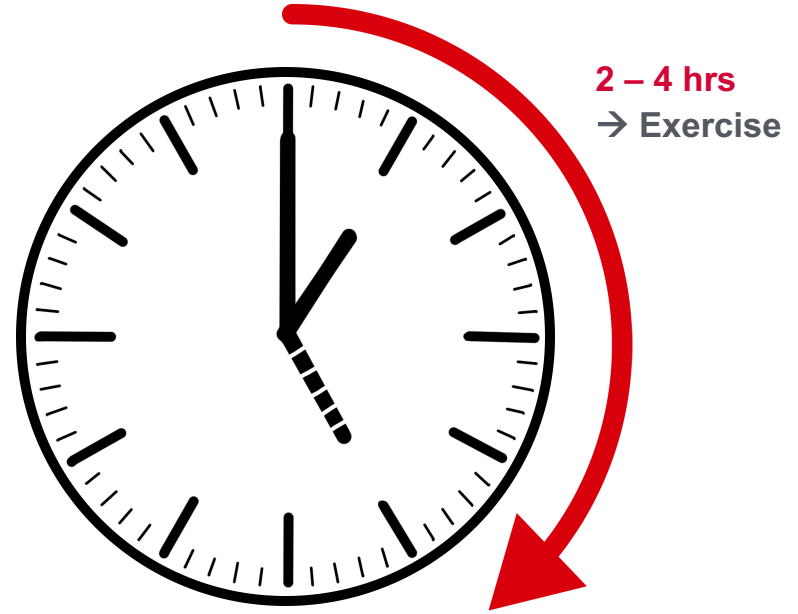
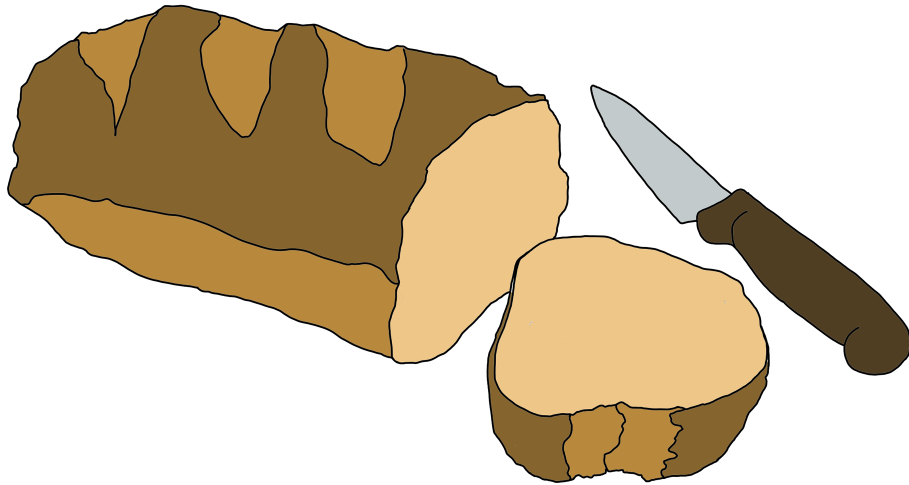


# Recommendations from the allergist





# Recommendations from the allergist



# Summary

- Many types of allergic reactions
- Most common:

## **Immediate reactions**

- Mediated by IgE-antibodies
- Minutes to some hours after allergen contact
- Hay fever, asthma, food

## **Delayed allergic reactions**

- Mediated by T-Lymphocytes
- 1-2 days after allergen contact
- Dermatitis, antibiotics