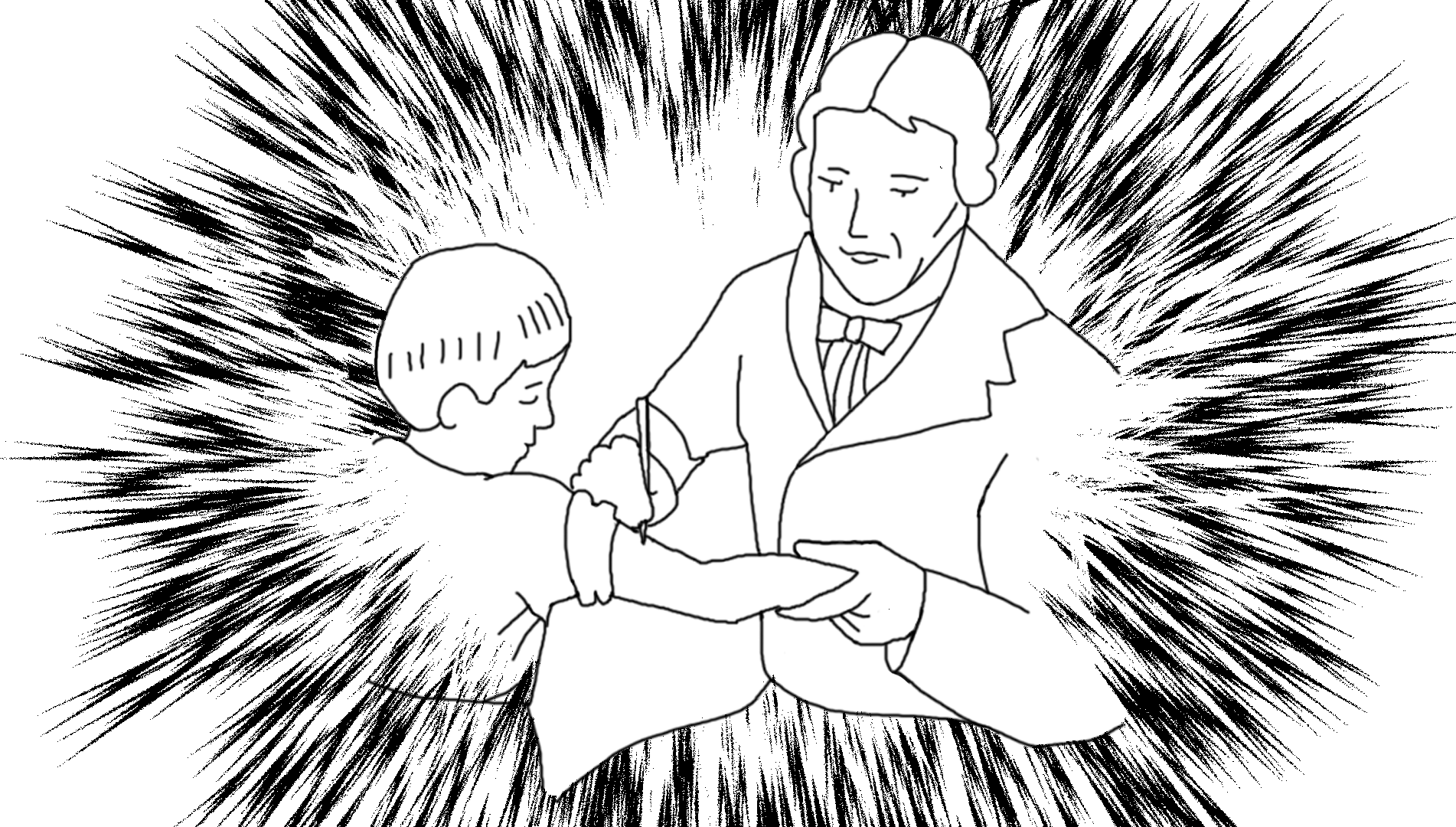


**University
of Basel**

A king eating strawberries

Prof. Dr. med. Andreas Bircher













Nettle rash /
Urticaria

Frequent conditions

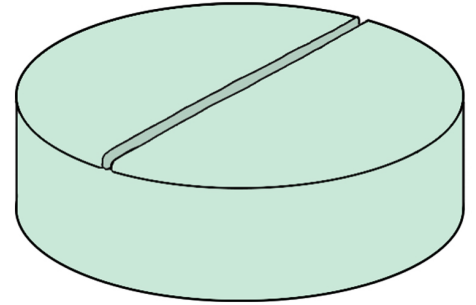
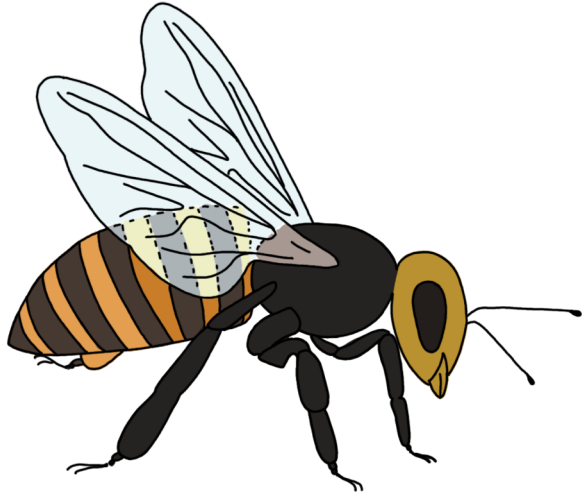


Nettle rash /
Urticaria



Angioedema /
Quincke's edema

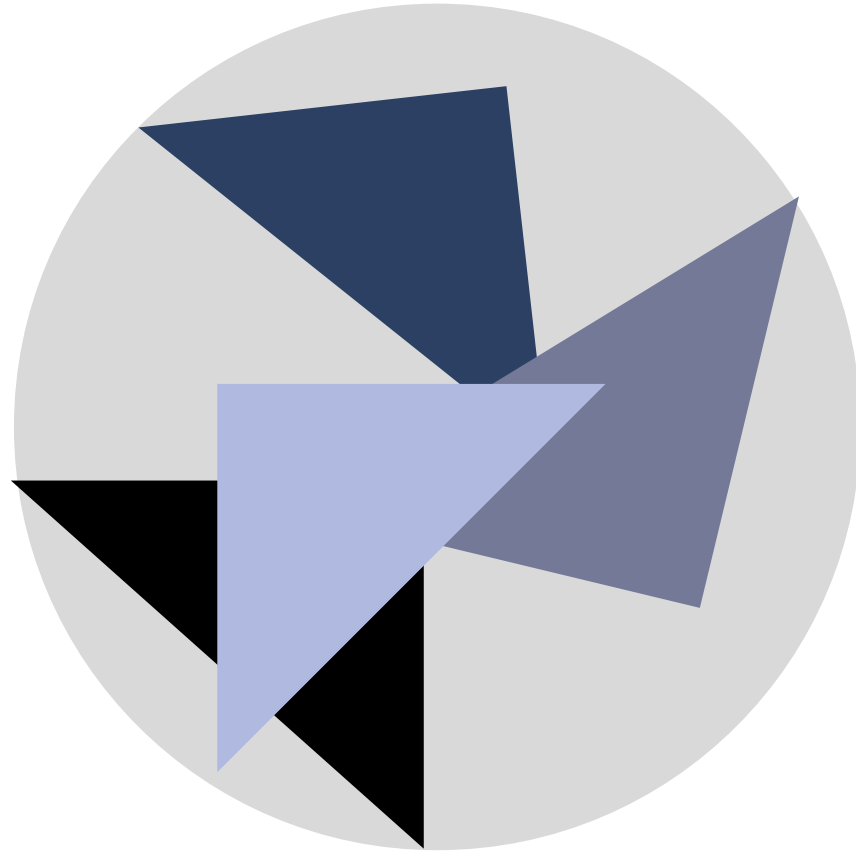
15% of people suffer from it at one time in their life.





**Blood or
'Sanguis'**

**Mucus or
'Phlegm'**

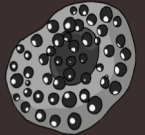


**Yellow Bile or
'Chole'**

**Black Bile or
'Melanchole'**



Macrophage



Mast cell



Dendritic cell

Skin /
Mucosals



Lymphatic
tissues

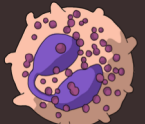


B cell



T cell

Circulation



Eosinophil



Basophil



Neutrophil



Natural
killer cell